

**Bancroft**  
SOFT FURNISHINGS

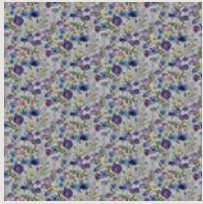
# COUNTRY GARDENS COLLECTION

An abundance of blossoming botanicals

[WWW.BANCROFT-FABRICS.COM](http://WWW.BANCROFT-FABRICS.COM) / 01274 518888



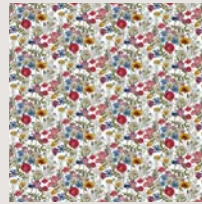
Audley - Cornflower



Audley - Lavender



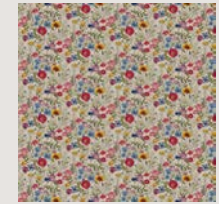
Audley - Moonflower



Audley - Wildflower



Audley - Cornflower  
on Linen



Audley - Wildflower  
on Linen



Hidcote - Cornflower



Hidcote - Lavender



Hidcote - Moonflower



Hidcote - Wildflower



Hidcote - Cornflower  
on Linen



Hidcote - Wildflower  
on Linen



Levens - Cornflower



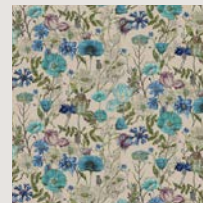
Levens - Lavender



Levens - Moonflower



Levens - Wildflower



Levens - Cornflower  
on Linen



Levens - Wildflower  
on Linen

COUNTRY GARDENS PATTERN REPEATS

Audley 17.25cm H - 8.6cm V

Hidcote 138cm H - 69cm V

Levens 69cm H - 34.54cm V





**Country Gardens** delivers an abundance of blossoming botanicals to give an exciting style refresh in hospitality and care home bedrooms and public areas.

Hidcote is full of large and generous blooms, Levens is reminiscent of a bountiful summer border and Audley with its petite flowers forms a complementary pattern, use for stunning curtains and statement upholstery and lift the look of interior spaces.

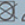
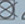

Each design is available in four joyful palettes: Cornflower with lustrous tones of turquoise, purple and pink, Wildflower in a riot of vivacious summer colours, soft and mellow Lavender with a warm grey ground and Moonflower, vivacious blooms set off with a rich moody inky blue.

All designs are available printed onto a range of base fabrics to suit your requirements for curtains, bedding, upholstery and accessories. See back page for **FR PFP Base Fabrics - Range 1** options and specifications or contact our Sales Desk on 01274 518888 for further information.

# FR PFP BASE FABRICS - RANGE 1

For Print Collections: Country Gardens, Fiorire, Oakland & Oakland Zest

\*Printed to order (minimum order 6 metres per design/colour)

| Base Cloth                      | Usage      | Composition    | Weight | Printable Width | Care instructions  | FR Standard                                | Abrasion |
|---------------------------------|------------|----------------|--------|-----------------|--|--|----------|
| Blackout Drapery Velvet         | Drapery    | 100% Polyester | 450gsm | 134cm           |        | BS 5867 PT2:B, IMO                         | N/A      |
| Panama Drapery                  | Drapery    | 100% Polyester | 221gsm | 146cm           |      * | BS 5867 PT2:C, IMO                         | N/A      |
| Blackout Drapery                | Drapery    | 100% Polyester | 240gsm | 134cm           |        | BS 5867 PT2:B, IMO                         | N/A      |
| Dimout Drapery                  | Drapery    | 100% Polyester | 260gsm | 146cm           |        | BS 5867 PT2:C, IMO                         | N/A      |
| Plain Velvet Upholstery 7051    | Upholstery | 100% Polyester | 390gsm | 136cm           | Vacuum with appropriate attachment.  | BS 7176 Med Hazard (Crib 5 & EN 1021), IMO | 100,000  |
| UPH06 AB/AF Wproof Upholstery   | Upholstery | 100% Polyester | 400gsm | 136cm           |  | BS 5852 Crib 5                             | 55,000   |
| Linen Look Upholstery 7074      | Upholstery | 100% Polyester | 475gsm | 136cm           | Do not wash, wipe clean only   | BS 7176 Med Hazard (Crib 5 & EN 1021), IMO | 100,000  |
| Textured Velvet Upholstery 7081 | Upholstery | 100% Polyester | 350gsm | 136cm           |  | BS 7176 Med Hazard (Crib 5 & EN 1021), IMO | 50,000   |

## Usage



Drapery



Upholstery



Bedding



Accessories

## Performance



Flame Retardant



Washable



Anti-bacterial/  
Anti-fungal  
on UPH06



Water Repellent/  
Soil Resistant  
on UPH06

\* Can be washed at 71°C for thermal disinfection